

Goals and Priorities Report

Joseph P. Dragone, Ph.D.
Superintendent of Schools
August 19, 2015

Mission:

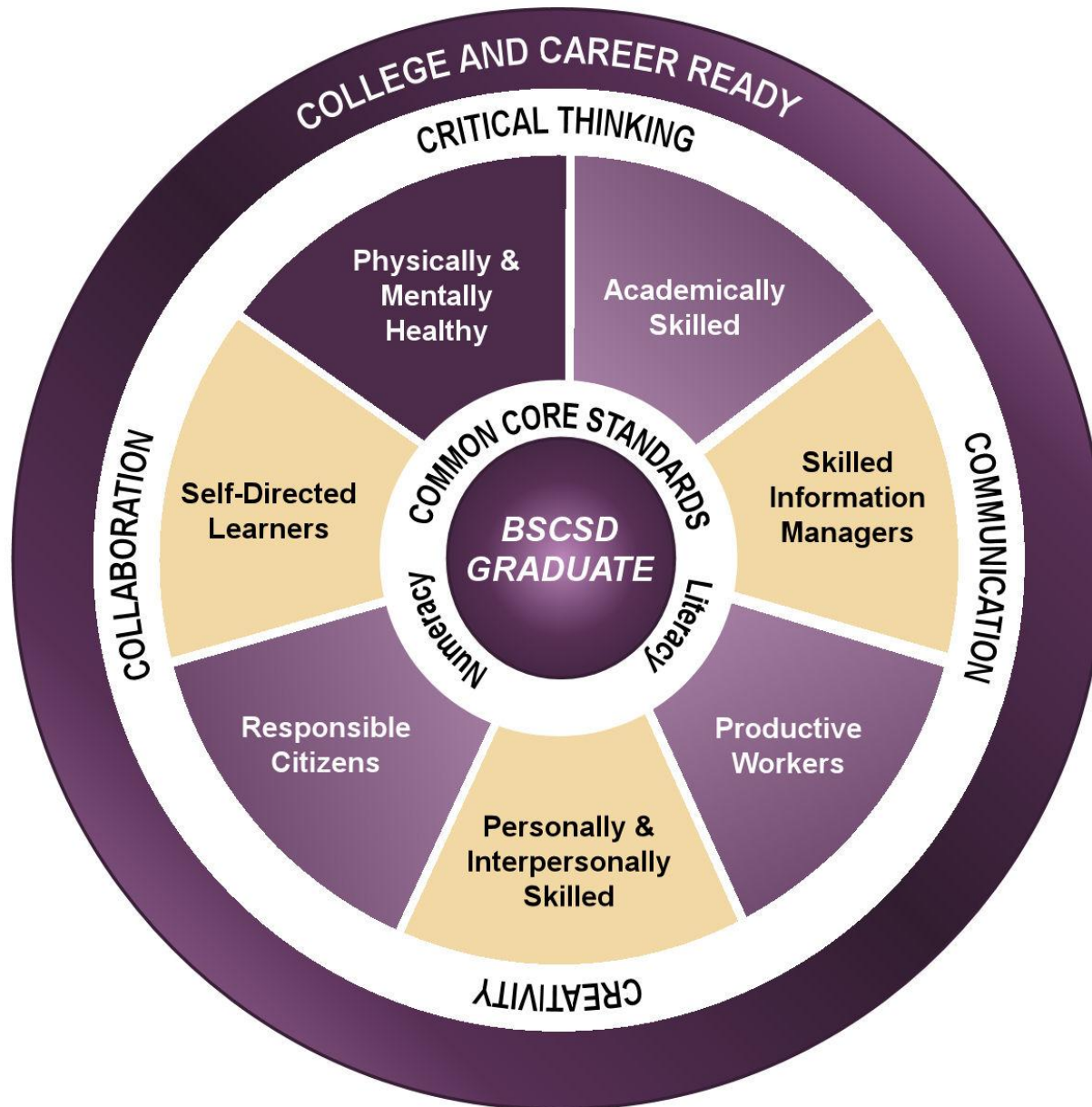
- The Ballston Spa Central School District is committed to providing an excellent education that maximizes the potential of each student. In partnership with family and community, our students will become responsible and well-rounded adults.

“Educating Everyone Takes Everyone”

Delivering on Our Mission:

- Outcomes:
 - Delivering Superior Performance
 - Having a Distinctive Impact on Student Achievement
 - Creating Lasting Endurance
- Based on District Long Range Goals and Articulated Priorities:
 - Academic Excellence
 - Commitment
 - Value
 - Involvement

Common Core Standards, Graduation Competencies and 21st Century Skills:



Academic Achievement Framework:

- Data Driven Instruction/Student Driven Instruction:
 - Sustained work as a function of BLT's; District wide analysis, horizontal/vertical meetings etc.
- Curriculum Alignment:
 - Sustain the alignment of frameworks and the development of resources
- Instruction:
 - Monitor the implementation of aligned instruction, providing support and enrich the current foundation of instructional practice.
 - Rubric development in Critical Thinking, Collaboration, Communication and Creativity/Innovation.

2014-2015 Academic Achievement:

- Rubrics to assess Critical Thinking, Collaboration, Communication and Creativity
 - Pilots completed in Art and PE
- Aligned K-8 NYS Social Studies Framework
 - Completed
- Propose an elementary summer support program
 - Completed

2014-2015 Academic Achievement:

- Common Core Aligned Geometry and ELA 10
 - Completed to date; commitment to sustained revision
 - Expanded to Algebra 2 and ELA 11
- Support the Master Teacher model
 - Completed
- Wrap-around Services for Students:
 - Successfully launched our second clinic at the MS/HS

2014-2015 Commitment and Value:

- Targeted professional development in:
 - Instructional strategies
 - Special Education
 - All aspects of the conversion to digital resources, access, blended learning, flipped instruction...
- **783 sessions 10,067 participants**
- Promote our workforce by highlighting members from all departments in a monthly feature on the District website
 - 60 Staff members featured

2014-2015 Commitment and Value:

- Wood Road Renovations
 - Completed on time
- Milton Terrace North Renovations, Year 3
 - Completed on time
- Athletic Renovations, MS Renovations and site work
 - Completed on time

2014-2015 Commitment and Value:

- Digital Conversion: User End
 - Teachers uploaded 3000+ resources to Safari Montage.
 - 445 teacher created courses and classes in ClassLink; 63,000 logins last year
 - LMS in use 1st – 12th Grade
- Focus on sustained implementation

2014-2015 Commitment and Value:

- Digital Conversion: Access and Management
- Since FY 2011:
 - Network connection has grown from 40 GB to 230 GB
 - Our wireless access points have grown by 3150%
 - Our virtual servers have grown by 586%
 - Our end user devices have grown by 127% to 3,740
 - Move to full IP phones throughout the district (over 500)

2014-2015 Commitment and Value:

- Employee Self-Service HR Systems:
 - Ability to update directory information for all employees
 - Proof of concept implemented for time and attendance for select 12 month employees
 - Expand to all employees this year for attendance and leave accounting.

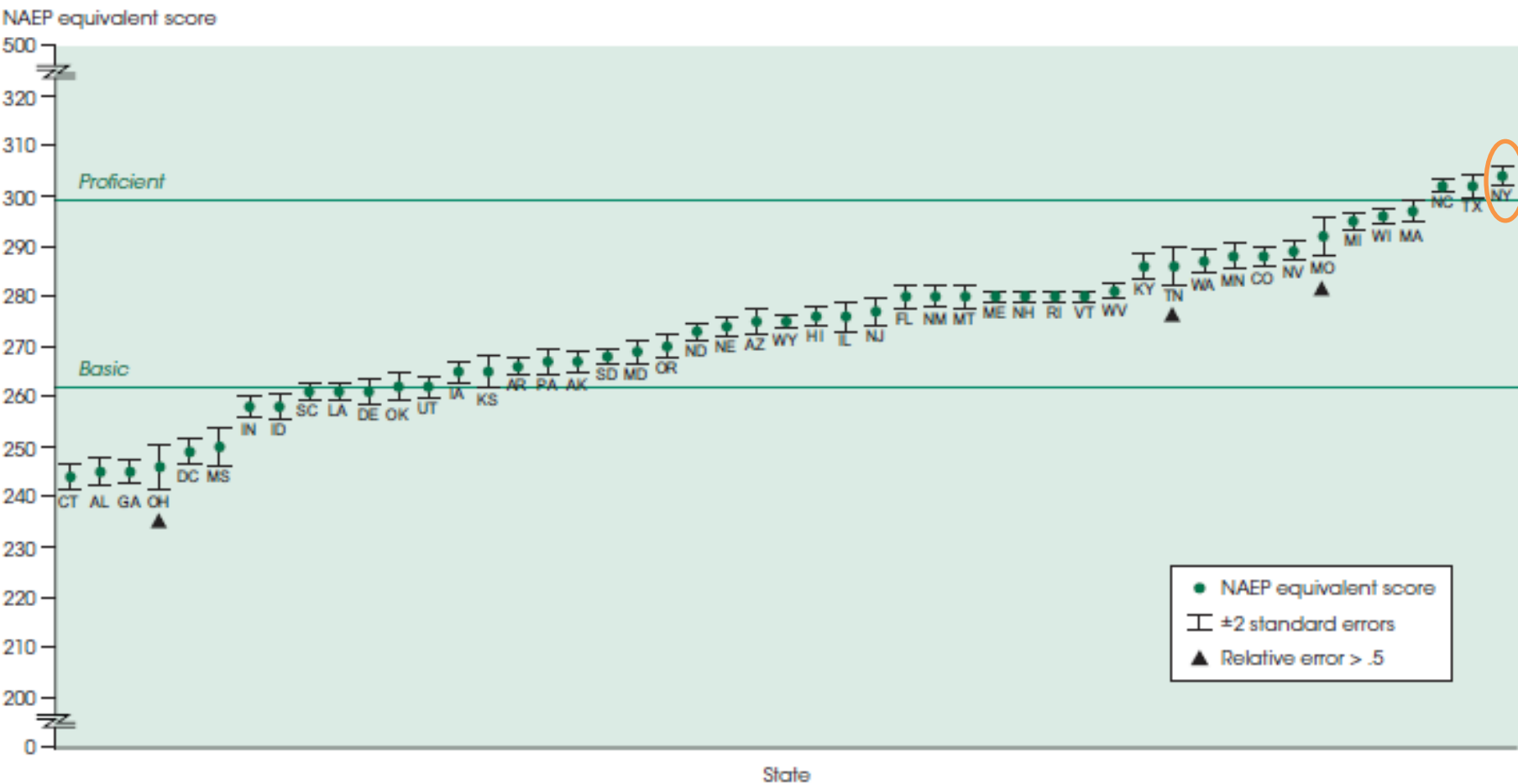
2014-2015: Involvement:

- Implement a new parent/community notification system.
 - Completed
- Continued focus on community based activities and involvement about our work
 - Penny Harvest, Service Learning across the District
 - Arts/Music Showcases, Health and Wellness Fairs, Scottie Seminar, Color Run...
 - Community PARP activities
 - National PTA Schools of Excellence

2015-2016: Academic Achievement: Policy and Practice

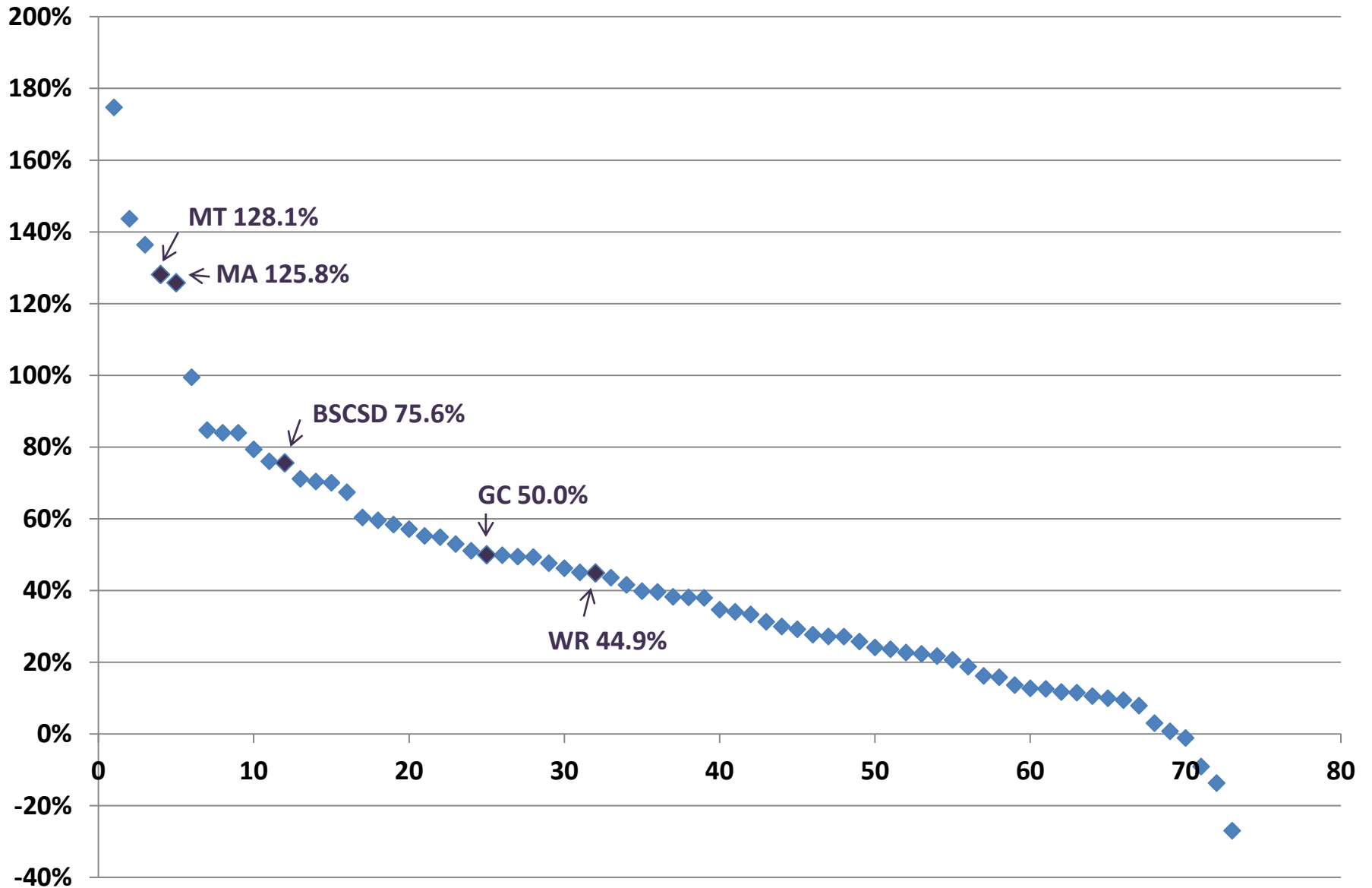
- Continuing to meet the demands of the new standards and assessments:
 - Regents Math (Algebra 1, 2 and Geometry), Regents ELA and new Science standards
 - Sustained Social Studies alignment
 - Graduation Pathways
 - College Readiness
- APPR and Technology

Figure 5. NAEP scale equivalents of state grade 8 mathematics standards for proficient performance, by state: 2013

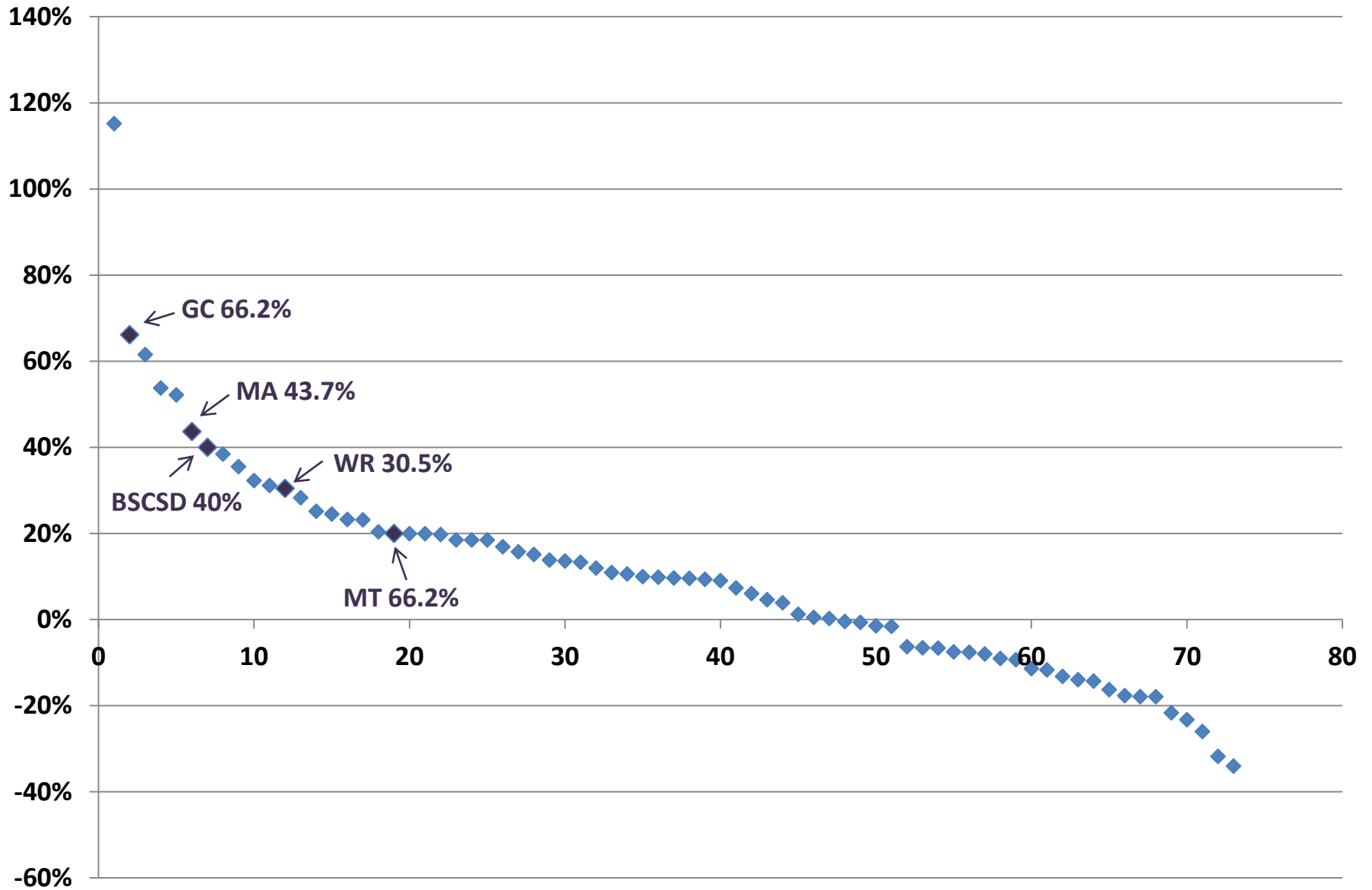


SOURCE: U.S. Department of Education, Institute of Education Sciences, National Center for Education Statistics, National Assessment of Educational Progress (NAEP), 2013 Mathematics Assessment.

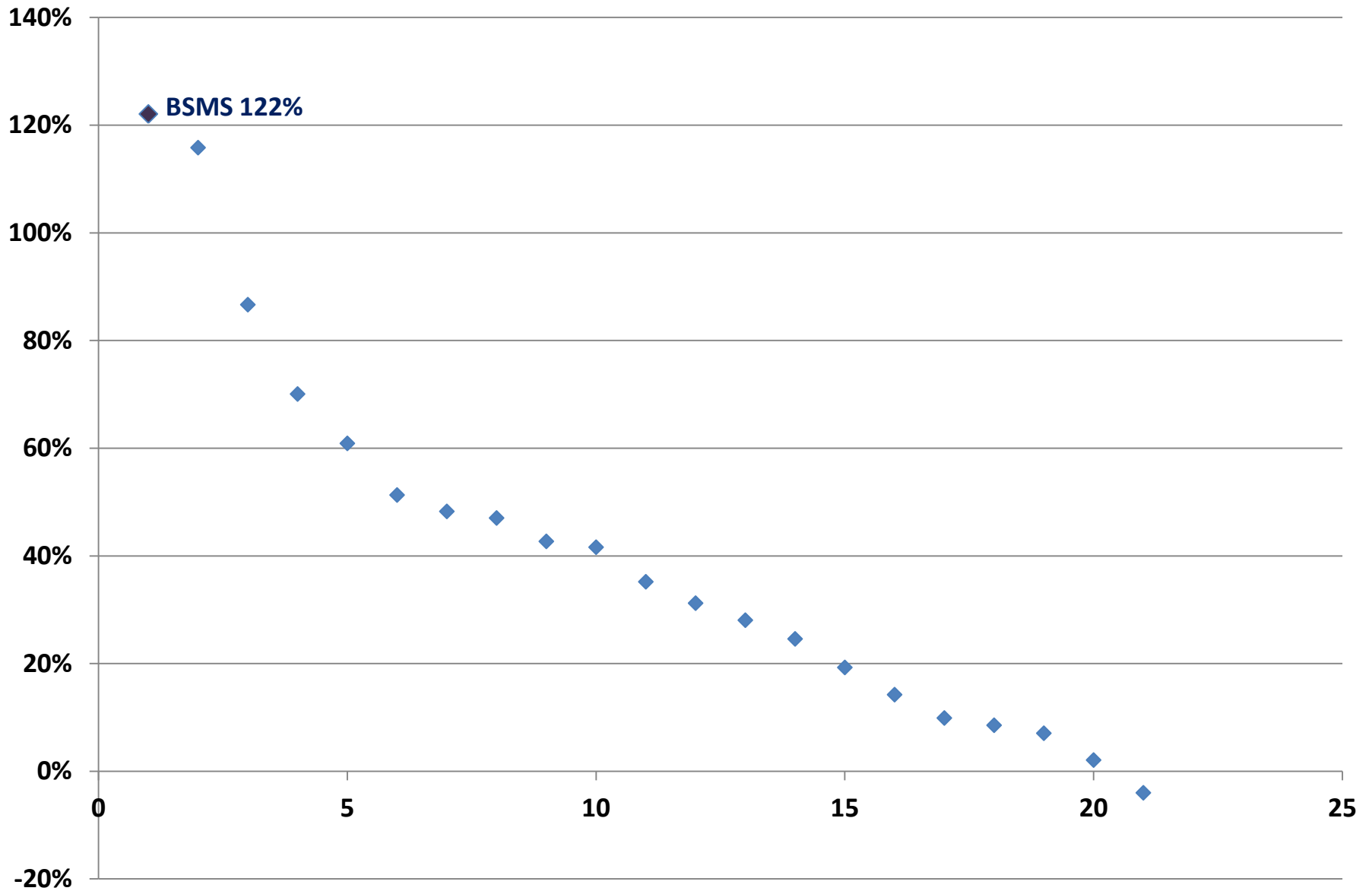
Math 3: % Growth 2013-2015



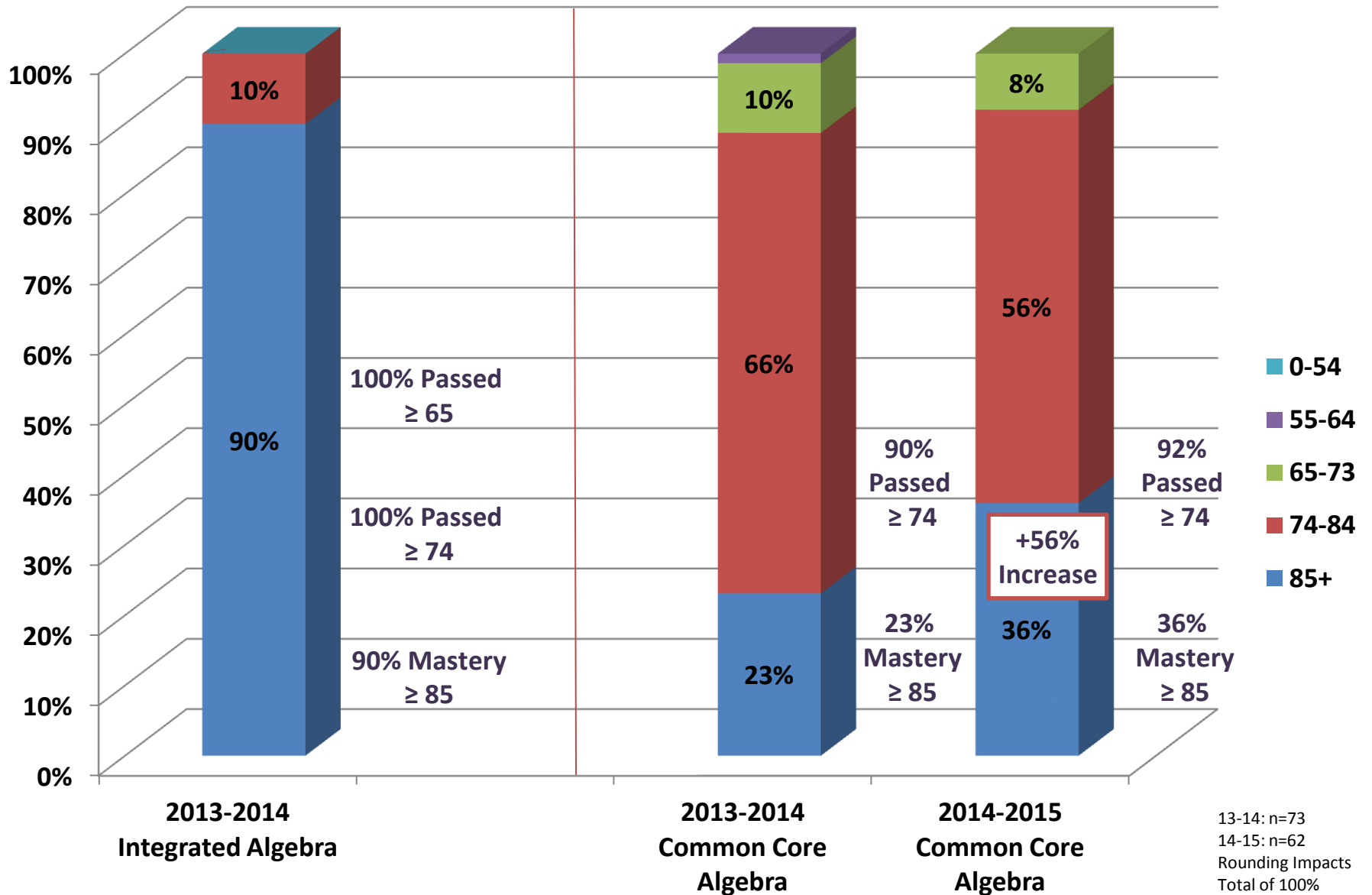
ELA 3: % Growth 2013-2015



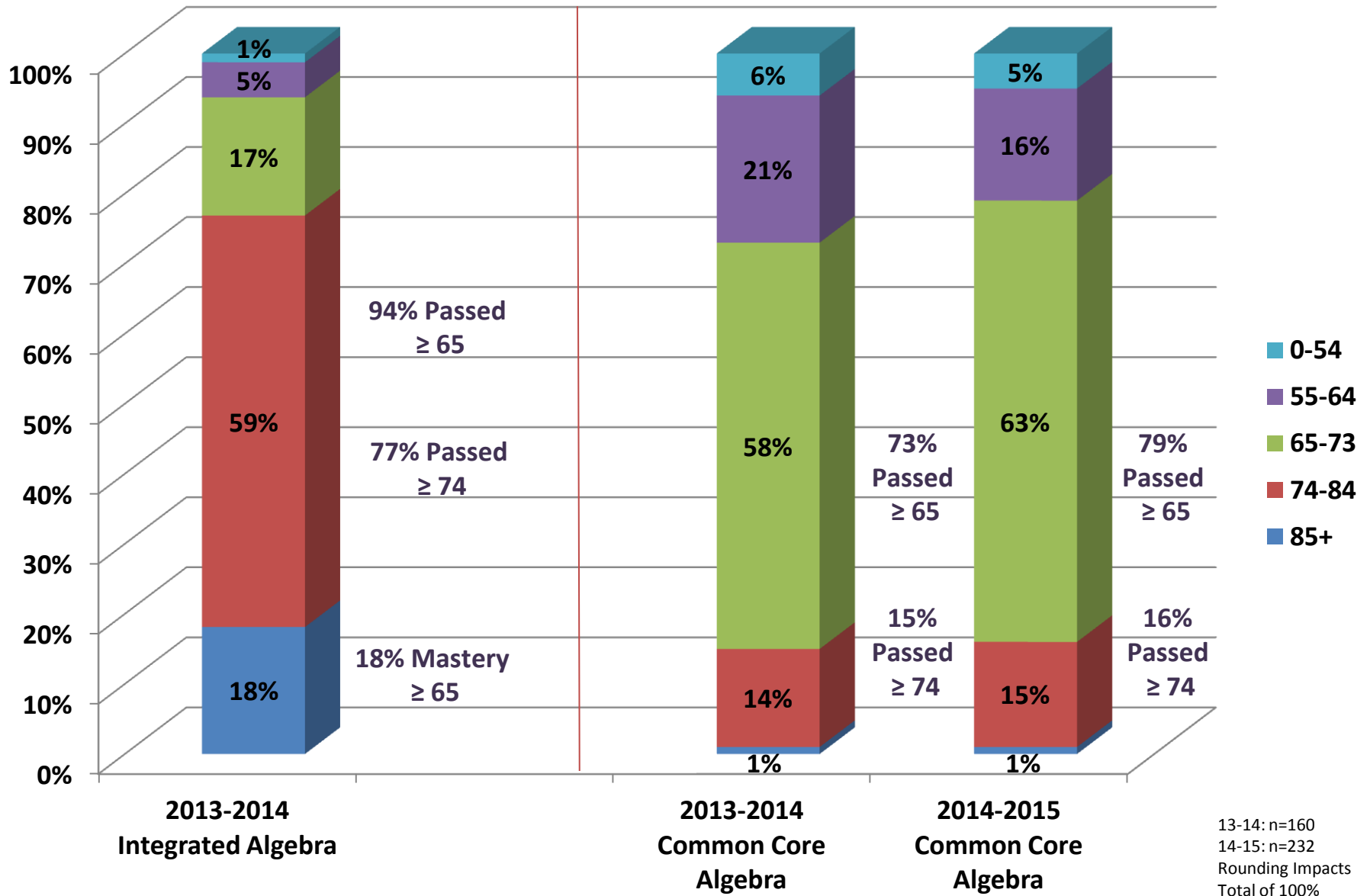
Math 6 %Growth: 2013-2015



8th Grade Algebra Students: 2013-2014 and 2014-2015



9th Grade Algebra Students: 2013-2014 and 2014-2015



2015-2016: Academic Achievement: Continuing to Build Capacity

- Review the scope, sequence and vertical alignment of the secondary Mathematics program.
- Review the scope, sequence and vertical alignment of the elementary Science program.
- Articulate Pathways to College Coursework in Math and English for all Seniors to receive college credit and avoid remediation in post-secondary study.
- Common Core Standards aligned curriculum and instruction in ELA 11 and Algebra 2.

2015-2016: Academic Achievement: Continuing to Build Capacity

- Articulate new 4+1 Graduation Pathways and program options for students.
- Further develop transdisciplinary learning opportunities
- APPR and Technology Plans completion and submission.
- Further develop rubrics to assess Critical Thinking, Collaboration, Communication and Creativity.
- Sustain the development of instructional strategies and resources to enrich professional practice.

2015-2016 Commitment, Value and Involvement

- Sustain the implementation of all current facilities renovation projects.
- Expand the implementation of our employee self-service system to all employees for attendance and leave accounting.
- Improve our District Wide Communication and Incident Response Capacity.
- Sustained Commitment to digital resources

2015-2016 Commitment, Value and Involvement

- Further enhance our professional development opportunities by developing a library of model lessons including videos and associated resources.
- Further sustain the work of our community based activities and district reach.

Barriers to Education

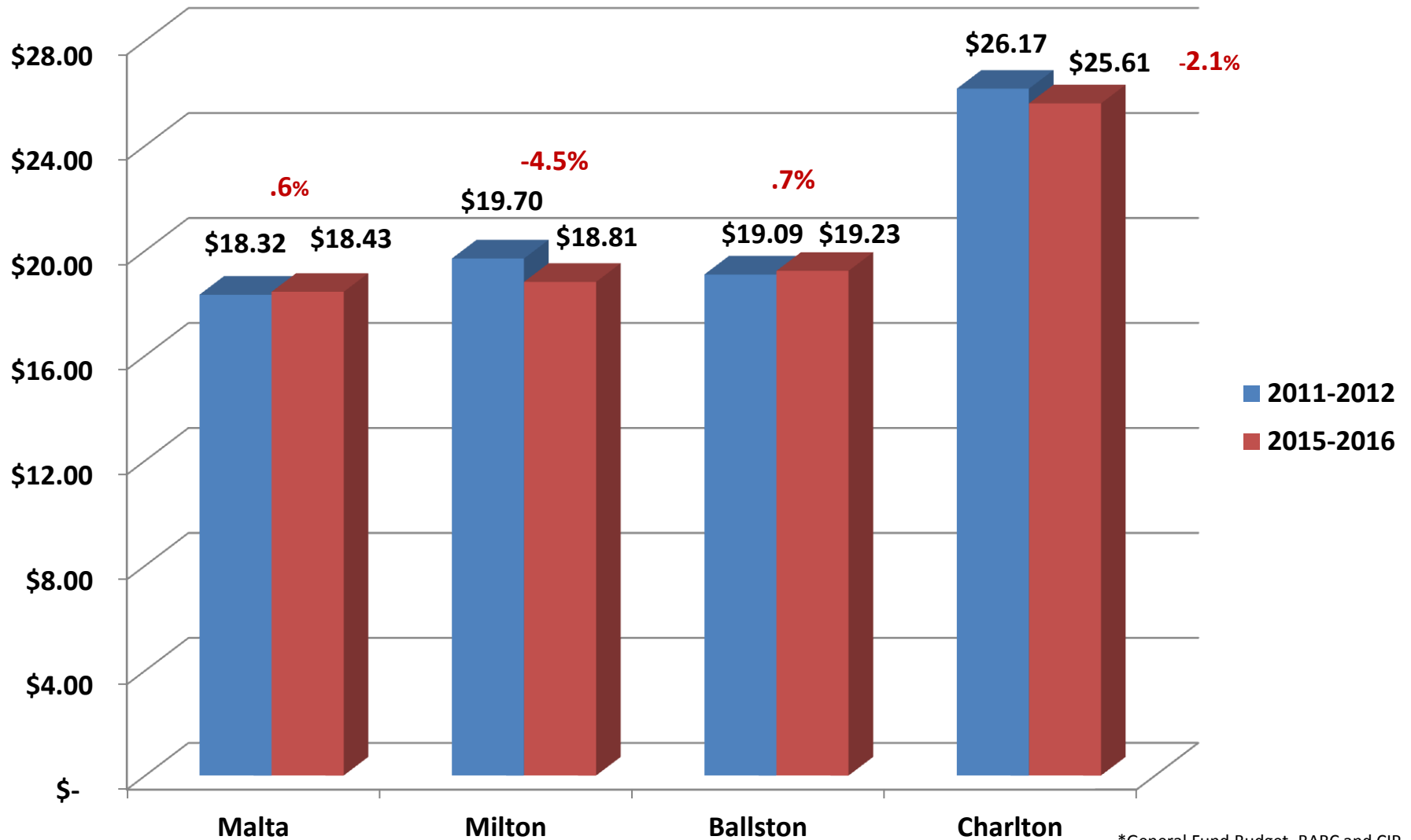
- 2015-2016 Free and Reduced Lunch*
 - District Average: 30% (+4%)
 - Wood Road: 43% (+6%) (29% in 09-10)
 - Milton Terrace North: 38% (+4%) (28% in 09-10)
 - Middle School: 32% (+6%)
 - Gordon Creek: 26%
 - High School: 23%
 - Malta Ave.: 23% (+4%)

Barriers to Education:

- Families in Transition:
 - We served 178 students from 131 Families that were homeless, at-risk of becoming homeless or in temporary housing.
- Mental Health Clinics (May 2015):
 - Served 108 students; 24 on a wait list
 - Attendance up 34%; prevented 6 hospitalizations

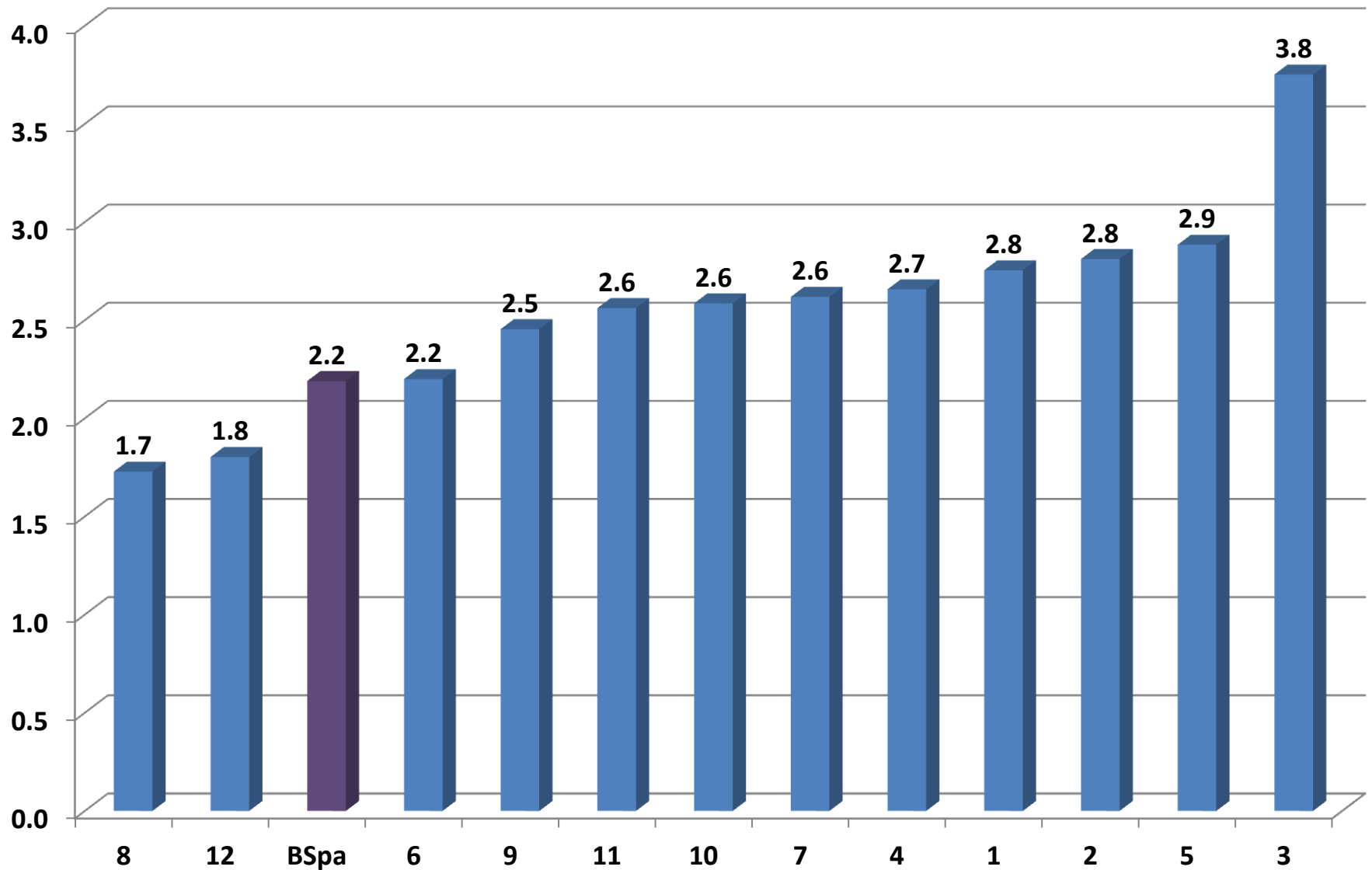
Tax Rates Per \$1000 Assessed Value

5-Year Historical

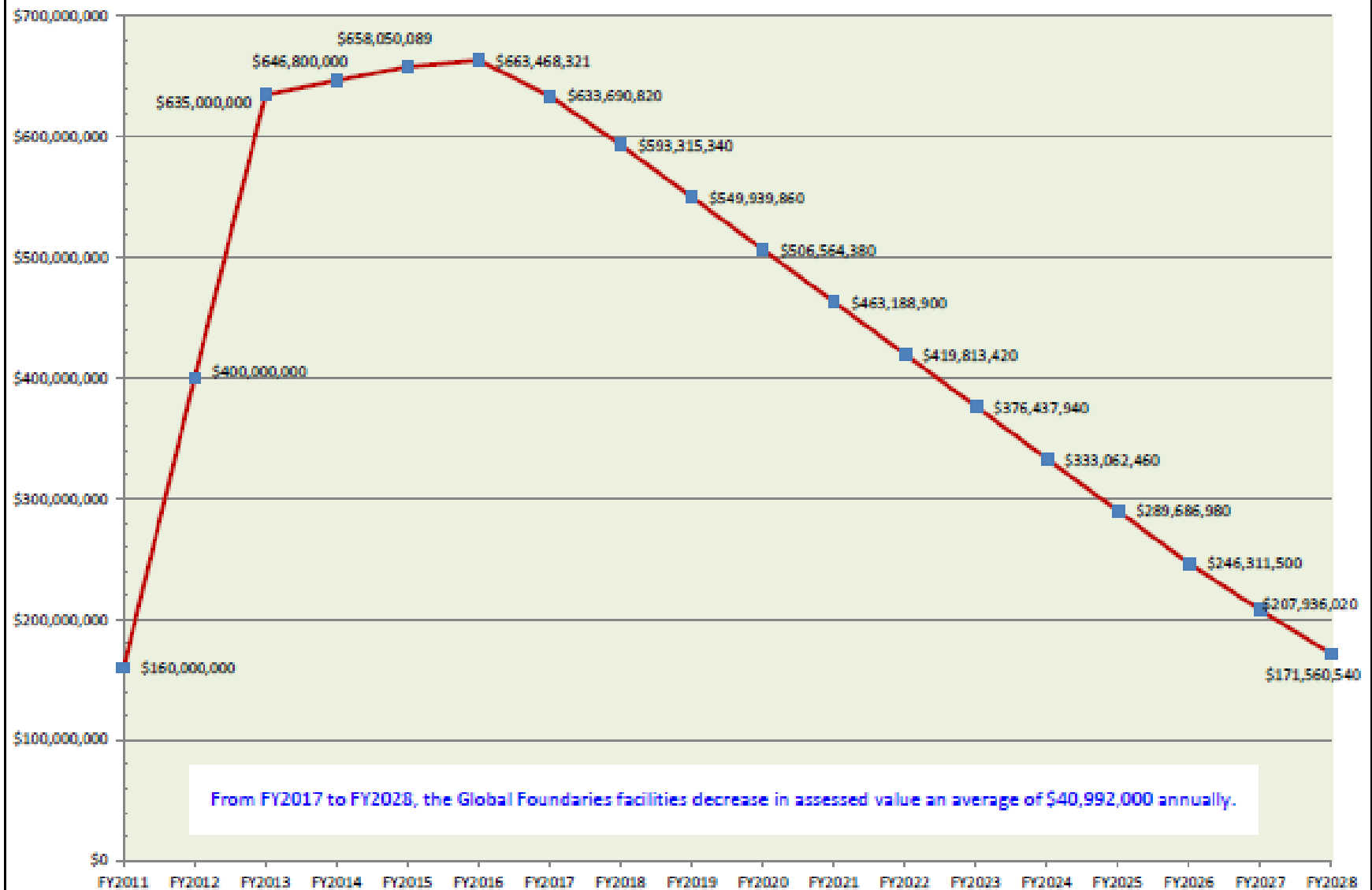


*General Fund Budget, BARC and CIP

Suburban Council 6-Year Average Tax Levy Increase (%) 2009-2010 to 2014-2015



Current Facilities: Projected Assessed Value Change



Summary:

- **We will run our own race**
- Focus on building capacity, sustained growth long term success:
 - Implement strategies to support goals while remaining focused on our mission and core values
 - Sustained commitment to continuous improvement and future thinking

Goals and Priorities Report

Joseph P. Dragone, Ph.D.
Superintendent of Schools
August 19, 2015